

COMMSECIRESS GUIDE

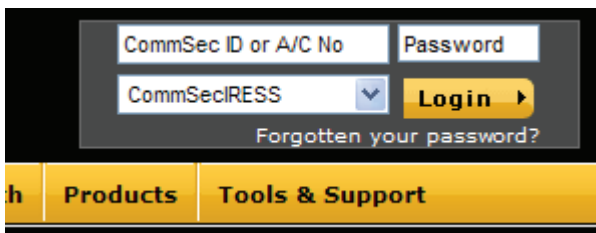
CommSecIRESS is CommSec’s dynamic, real-time trading platform for Australian equities, Exchange Traded Options, ETFs, Warrants and ASX CFDs. With your CommSec Client ID, you can easily trade a wide range of products from one convenient platform.

To find out more, just click on any of these links:

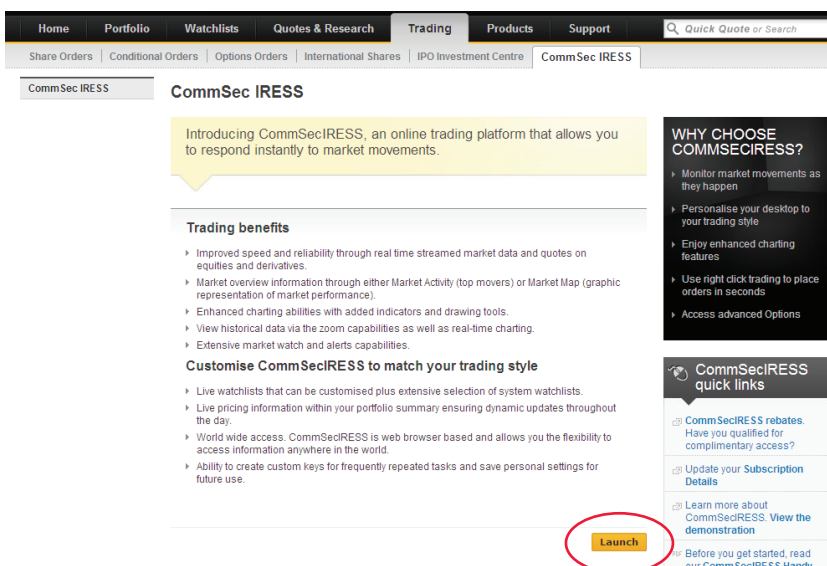
- Getting started
- Customising the layout
- Additional features for ASX CFDs
- Subscription costs

GETTING STARTED

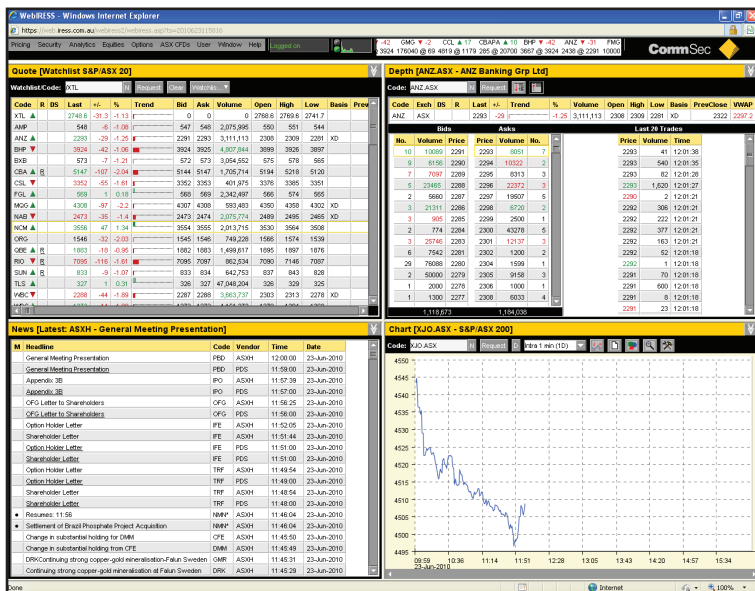
1. To access CommSecIRESS, login at **www.commsec.com.au** using your CommSec Client ID, which begins with a ‘5’ and is generally 8 digits long. Choose CommSecIRESS from the dropdown ‘Start in’ list (shown below) before clicking Login.



2. This will take you to the CommSecIRESS launch page. Alternatively, you can navigate to this page via **Trading > CommsecIRESS**. If you are already registered for CommSecIRESS, you will be able to click the Launch CommSecIRESS button and start trading.



- If you are not yet registered, you can do so by selecting the Subscription tab and following the instructions.
- Once you have registered, when you click 'Launch CommsecIRESS' the platform will start in a new window and will look something like this (the default display).

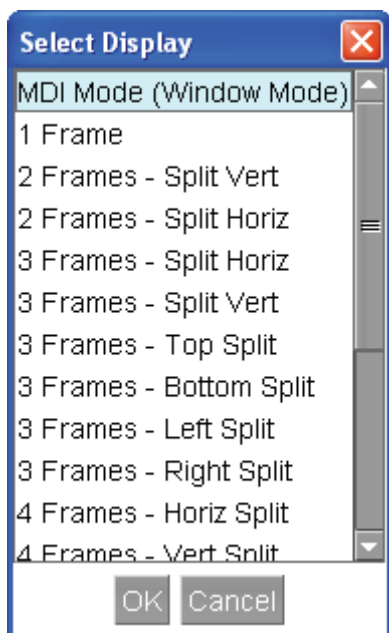


CUSTOMISING THE LAYOUT

With CommSecIRESS, you can choose and create the desktop setup that suits you, depending on what products you trade and the size of your screen.

To customise your layout:

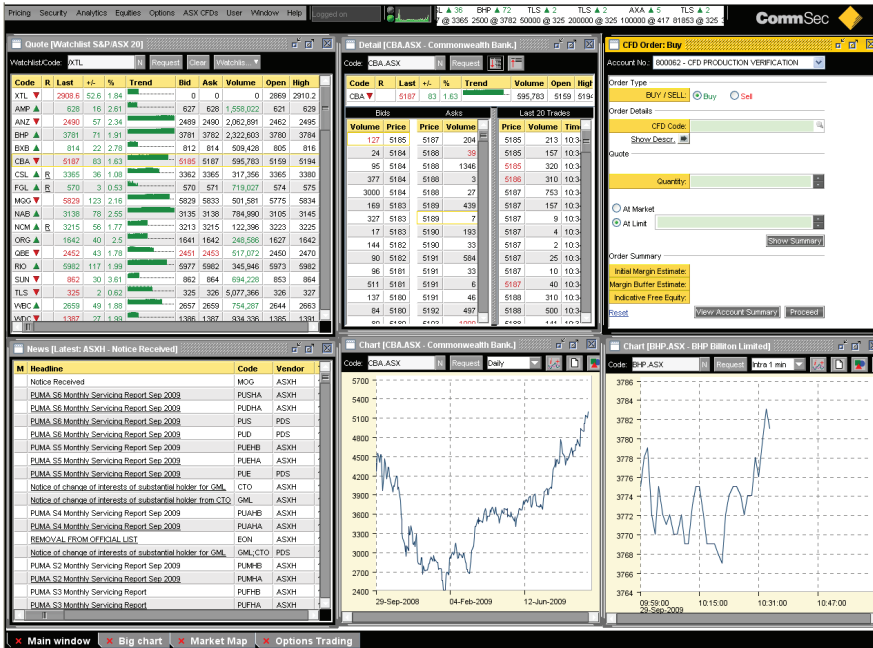
- Go to Window (top menu) > Configure display.
- Select the type of display you want from the list, then click OK. (A description of these options follows.)



AVAILABLE LAYOUTS

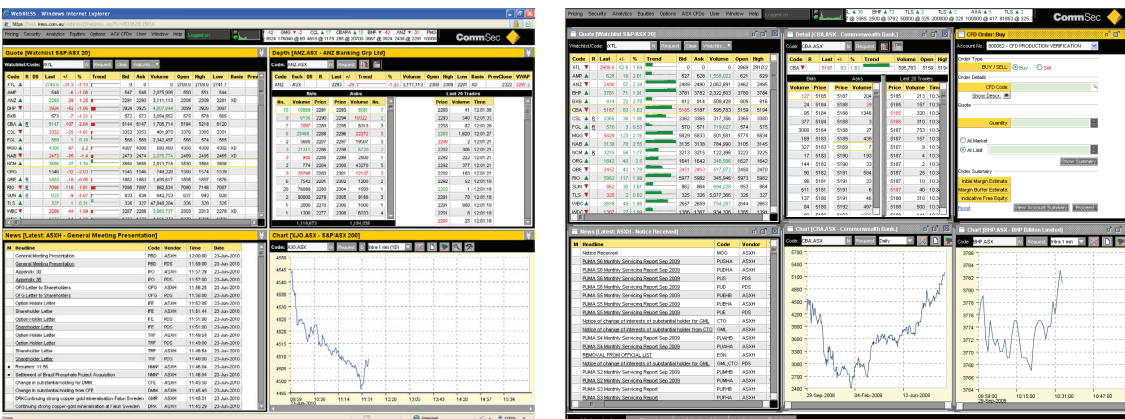
As there are a large number of options, we don't illustrate each one here, but give an overview of what's available.

- MDI Mode (Window Mode)** allows for multiple desktops to be active with a variety of windows on each. You will see in the example below that each 'desktop' (ie separate screen) is indicated by a tab at the bottom of the screen. You can move between these desktops simply by clicking on the tabs.

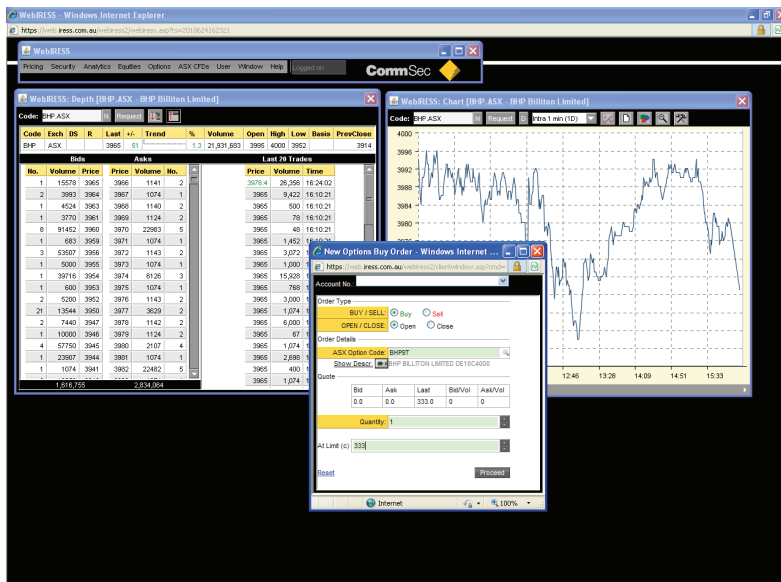


In the example above we have set up additional desktops as follows: Big chart, Market map and Options trading. In our main desktop, there are six windows, allowing for fast market data and trading.

- Frame Mode:** Frame mode allows you to 'dock' windows (up to nine different windows) to the main system screen, this is done automatically in set layouts. Frame mode is an easy way to create a trading layout that works for you. Shown below are examples of a 4-frame layout and a 9-frame layout.



- **No Frame Version:** The No Frame mode allows for multiple monitor support, and allows you to have windows that are undocked from the browser window. These can be placed anywhere on desktop - 1 screen or many.

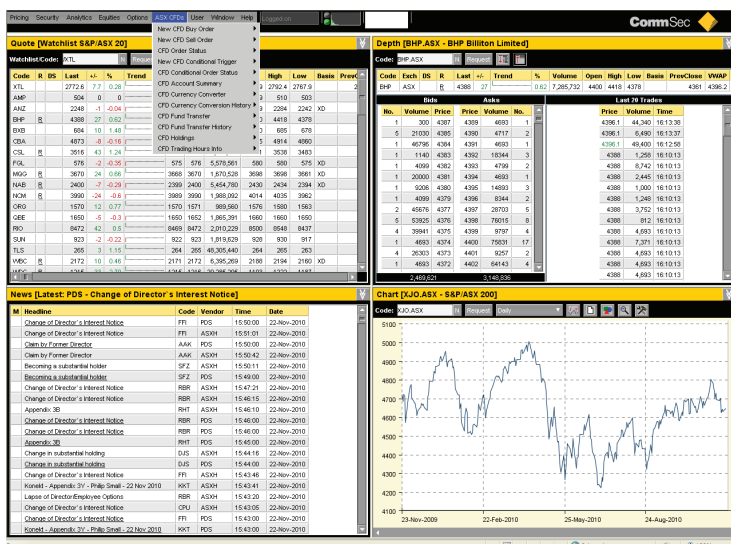


Tip: Once you are happy with the layout you have created, be sure to save it. Go to the **'Window'** dropdown menu and click 'Save layout'. If you later make an unwanted change, you can simply restore the layout to recover the correct version.

ADDITIONAL FEATURES FOR ASX CFDS

Under the ASX CFDs drop down window, there are a number of options specific to ASX CFDs, including:

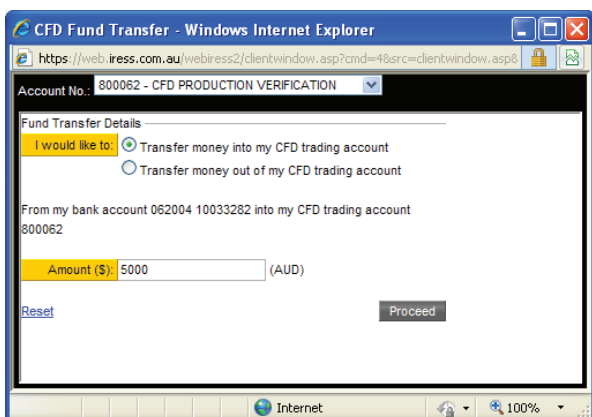
- CFDs orders and Status
- CFDs Holdings/Margins
- Funds Transfers
- Currency Conversion
- Online statements



CFD FUNDS TRANSFER

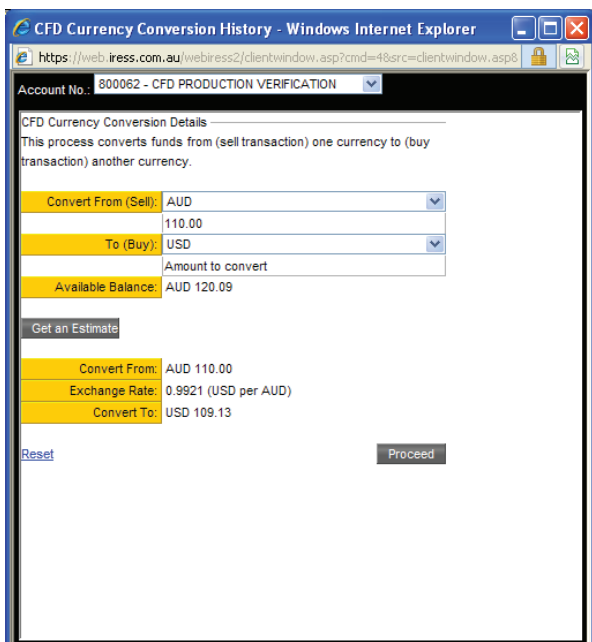
The CFD Funds Transfer function in CommSecIRESS allows you to transfer funds to or from your ASX CFDs account online. Simply:

1. Choose whether to transfer money to or from your account.
2. Enter the amount to transfer and click Proceed.
3. You will be asked to provide your trading password and the transaction will be processed.



CFD CURRENCY CONVERTER

The CFD Currency Converter lets you get an estimate and complete a funds transfer from one screen, which you need if you are trading ASX CFDs in foreign dollar denominated currencies. There are no transfer fees, other than FX spread for transferring from one currency to another.



Simply:

1. Choose the relevant currency from the Convert From (Sell) dropdown list.
2. Enter the amount to convert.
3. Select the To (Buy) currency from the dropdown list and click Get an Estimate.
4. To proceed with the conversion, click Proceed.

SUBSCRIPTION COSTS

Free access for frequent traders

If you place 8 or more trades per month (through one Client ID) or trade more than \$220 of brokerage per calendar month, you'll receive free access to CommSecIRESS. Please note that trades placed on OTC CFDs accounts or CommSec iPhone trader do not count towards your CommSecIRESS subscription. For information on the subscription fees for CommSecIRESS, visit **Support > Fees & Charges > CommSecIRESS**

